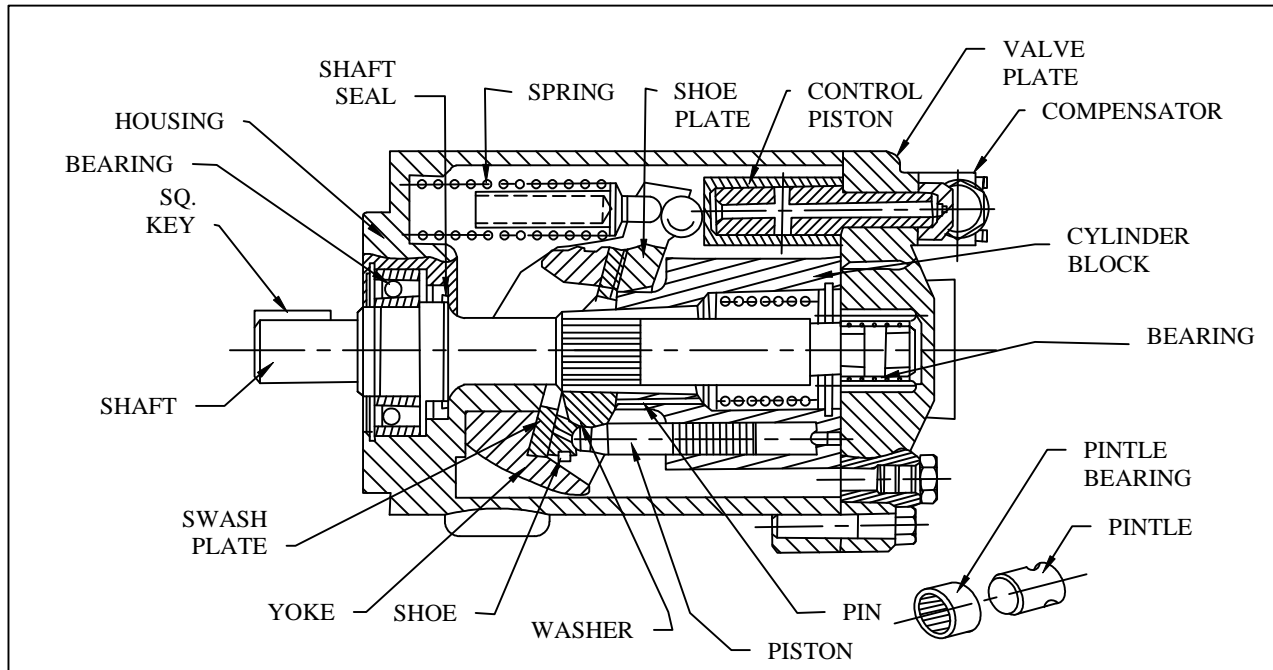


IFP PVB20/PVB29 PISTON PUMPS



SERVICE PARTS INFORMATION



PART #	DESCRIPTION	PART #	DESCRIPTION	PART #	DESCRIPTION
938274N	ROT GROUP PVB20	919683N	SEAL KIT	353230N	PINTLE BEARING
938275N	ROT GROUP PVB29	295262N *	SEAL	36924N	PINTLE PLUG
239335N	△ SW. PLATE	245976N *	GASKET	244931N	LIFT LIMITER
941883N	△ PISTON PVB20(9)	244956N *	COMP. GASKET	194025N	RET. RING
941888N	△ PISTON PVB29(9)	362029N	HOUSING	379793N	PISTON
248609N	△ SHOE PLATE	362028N	YOKE	379792N	PISTON ROD
938392N	△ SPHER. WASHER	294079N	YOKE BIG SPRING	185638N	RET. RING
248836N	△ PINS(3)	245975N	SEAT	251108N	PLATE BEARING
250688N	△ CYL BLOCK PVB20	117506N	RET. RING OUT	942169N	RH PLATE PVB20
259458N	△ CYL BLOCK PVB29	117507N	RET. RING IN	942170N	LH PLATE PVB20
238780N	△ THRUST WASHER	283090N	BEARING SHAFT	942171N	RH PLATE PVB29
246386N	△ SPRING CYL. BL.20	362135N	SHAFT	942172N	LH PLATE PVB29
263582N	△ SPRING CYL. BL.29	246353N	SHAFT KEY	942158N	C COMPENSATOR
194878N	RETAINER	388745N	PINTLE	942159N	CM COMPENSATOR
942192N	MAX STOP			942480N	CG COMPENSATOR
				924059N	CVP COMPENSATOR

* INCLUDE IN SEAL KIT

△ INCLUDE IN ROTATING GROUP

Bolt Torque 150 - 181 lb.in

Note:

- Optional side ports, thru-shaft available.
- Optional compensator/controls available. (see page B1.7)
- Optional maximum flow adjustment available. (see page B1.8)
- Optional foot bracket

Filtration

For satisfactory service life use full flow filtration to provide fluid which ISO cleanliness code 16/13 .