

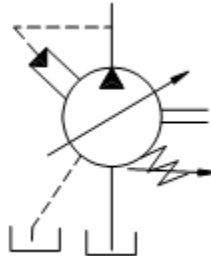
IFP A10VSO

VARIABLE AXIAL PISTON PUMPS



Available sizes:

- 18 — 1.10 in³/rev [18 cm³/rev]
- 28 — 1.71 in³/rev [28 cm³/rev]
- 45 — 2.75 in³/rev [45 cm³/rev]
- 71 — 4.33 in³/rev [71 cm³/rev]
- 100—6.10 in³/rev [100 cm³/rev]
- 140—8.45 in³/rev [140 cm³/rev]



NOMINAL PRESSURE

4000 psi [280 bar]

PEAK PRESSURE

5100 psi [350 bar]

FEATURES

- Variable volume piston pumps.
- Applied in open loop circuits
- Low noise level.
- Variety SAE & Metric mounting flanges.
- Good suction characteristics.
- Low noise level.
- High Power—Weight ratio
- Wide range of controls.
- Short Response time.
- Units can be piggybacked for multiple section assemblies
- Through drive available to adapt secondary pump.

SECTIONAL VIEW

