

IFP PVH57 / 74 / 98 / 131 VARIABLE AXIAL PISTON PUMPS



Available sizes:

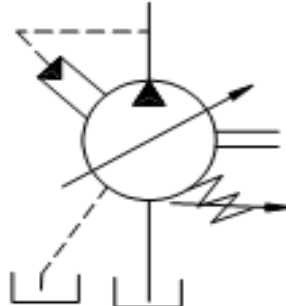
- 57 - 3.5 in³/rev [57.4 cm³/rev]
- 74 - 4.5 in³/rev [73.7 cm³/rev]
- 98 - 6.0 in³/rev [98.3 cm³/rev]
- 131 - 8.0 in³/rev [131.1 cm³/rev]

Nominal Pressure:

3625 psi [250 bar]

Peak Pressure:

4050 psi [280 bar]



FEATURES

- | | |
|---|---|
| <ul style="list-style-type: none"> * Variable volume piston pumps * Low noise level * Good suction characteristics * Industrial & Mobile applications * Thru-drive available to adapt secondary pump | <ul style="list-style-type: none"> * Applied in open loop circuits * High Power / Weight ratio * Wide range of controls * Long service life * Units can be piggybacked for multiple section assemblies |
|---|---|

SECTIONAL VIEW

