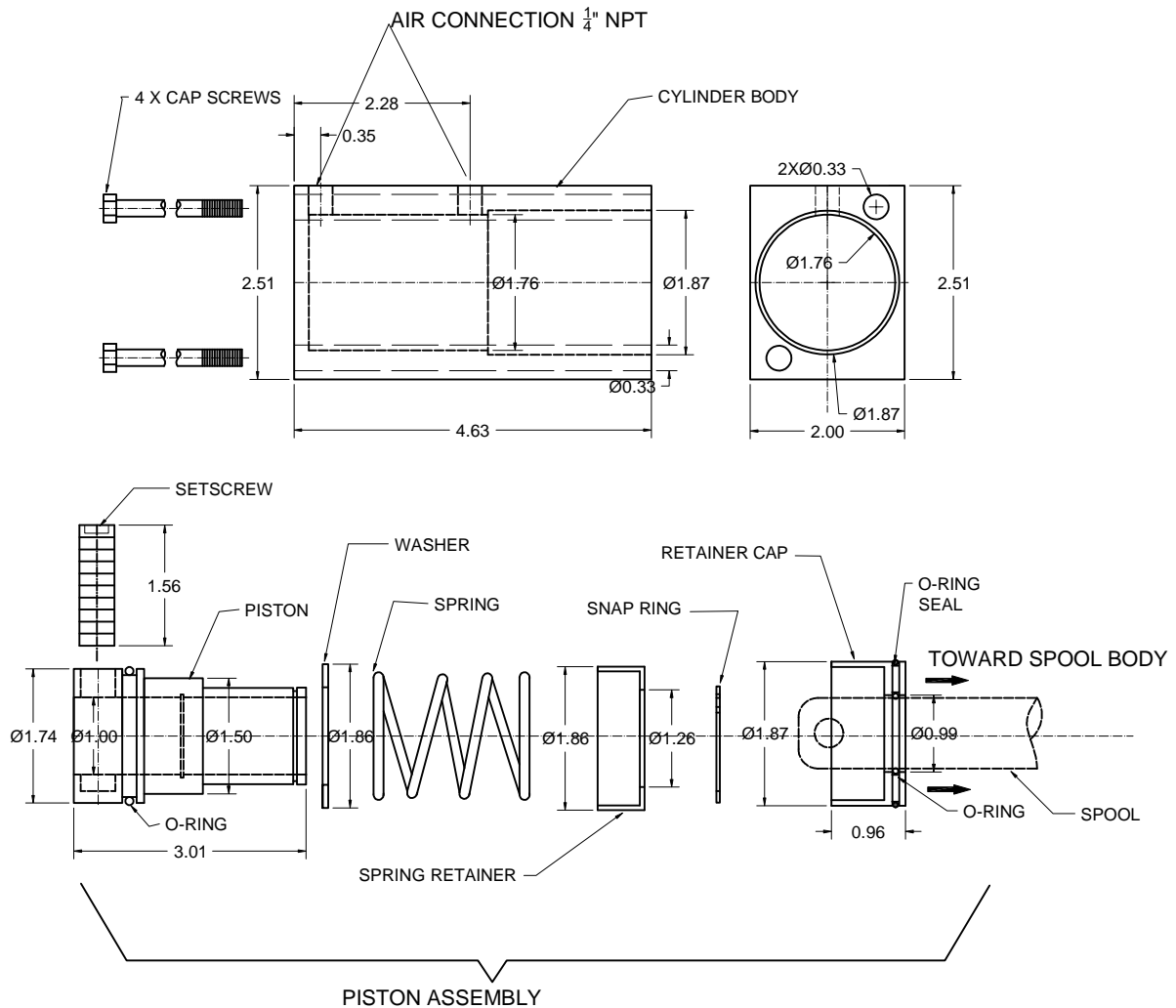


IFP C101/C102 AIR SHIFT



Air Shift Installation Instructions

- The Air shift mounts on IFP C101 / C102 Dump pumps in place of the detent end cap
- Prepare work area by assuring a clean work environment for assembly & disassembly of the Dump pump spool valve

Preparing Pump / Valve spool for air shift kit installation

- Remove snap ring and washer from valve spool
- Remove the detent cap, spring and ball from the valves end cap
- Remove four(4) cap screws and slide detent cap from the spool
- **DO NOT REMOVE "O" RING FROM VALVE HOUSING**

Installation of air shift kit

- Remove retainer cap
- Remove snap ring / spring retainer / spring / washer
- Slide piston assembly from the cylinder body
- Remove setscrew from piston assembly using 1/4" hex wrench
- Grease and slide Retainer Cap over valve spool with flat face of cap facing the spool body
- Assemble snap ring / spring retainer / spring / washer on piston
- Slide piston over valve spool and align and insert set screw attaching the piston to the spool
- Grease piston and O Rings
- Slide cylinder body over the piston assembly making sure not to damage the O Rings
- Secure the assembly using the 4 cap screws supplied