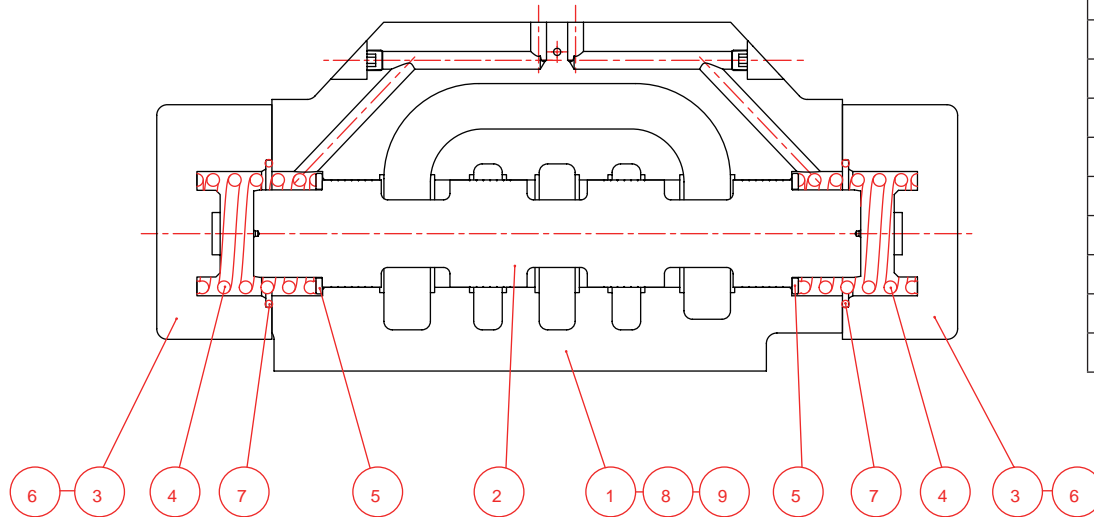


# IFP DG10 SOLENOID CONTROLLED PILOT OPERATED DIRECTIONAL VALVE SIZE NG32/CETOP10

CROSS SECTION DIAGRAM:

■ DG10-E1-2C-T-A



No.	Parts Name
1	Body
2	Spool
3	Cover
4	Spring
5	Washer
6	Screw
7	O Ring
8	O Ring
9	O Ring

Parts No.	Parts Name	Specification	Port	Q'ty
7	O Ring	AS568-230 N90		2
8	O Ring	P24 N90	X, Y	2
9	O Ring	P38 N90	A, B, P, T	4