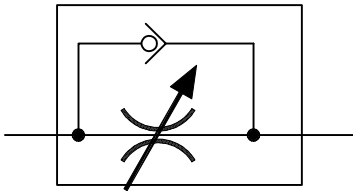


IFP FLOW CONTROL VALVES

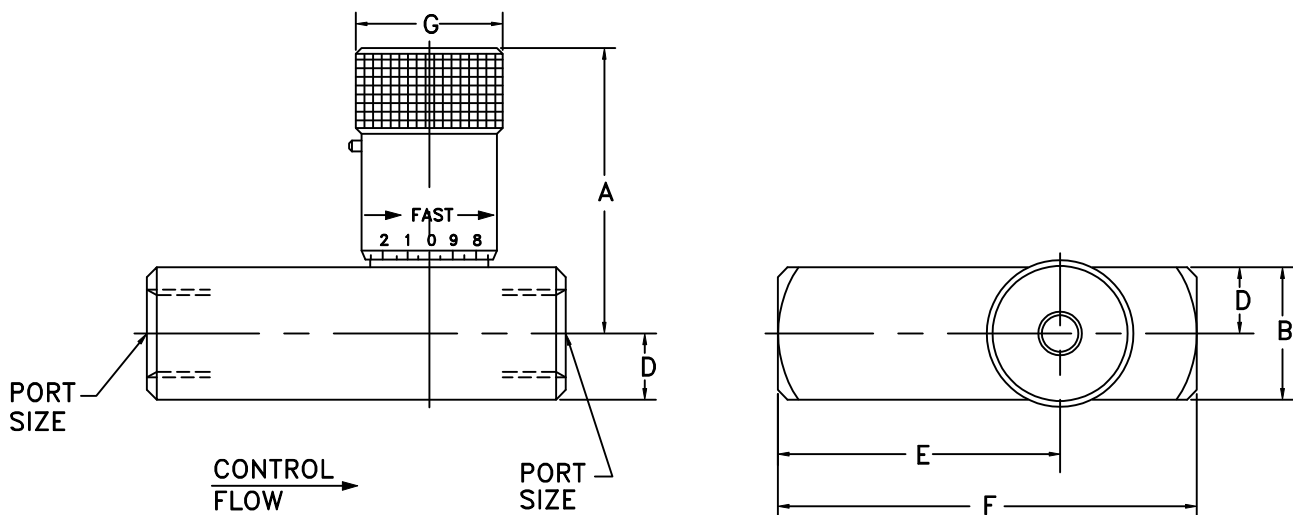


- Designed for extremely precise control of air and hydraulic fluids
- Max pressure 5000 PSI
- All metal construction
- Micrometer knob with easy to read colour bands
- Temperature -20° F to 400° F



Model	Free Flow Rate GPM	Port Size	A	B	E	F	G	Weight lbs.
FCI 02	5	1/4-18 NPTF	1.75	0.81	1.66	2.62	0.81	0.5
FCI 03	8	3/8-18 NPTF	2.16	1.00	1.75	2.75	1.00	0.7
FCI 04	15	1/2-14 NPTF	2.68	1.25	2.24	3.44	1.19	1.5
FCI 06	25	3/4-14 NPTF	3.26	1.50	2.58	3.88	1.38	2.6

Material - Steel Body
 Stainless Piston & Stem
 Viton "O" Ring/Teflon back-up



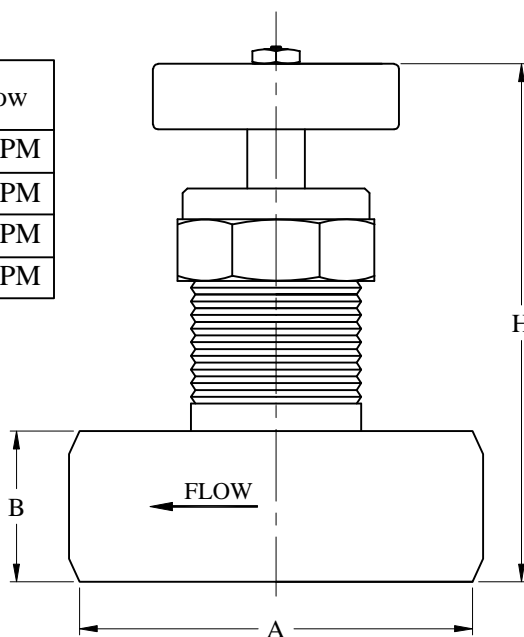
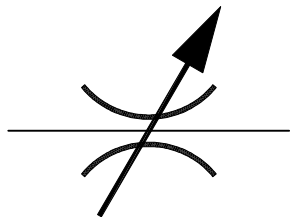
IFP NEEDLE VALVES



- 3000 PSI working pressure
- Leak-free shut-off
- Panel mount hardware standard
- Fine Metering
- Adjustments can be made under pressure



PART No.	THREAD	A	B	H	Pressure	Flow
NVI-02	1/4" N.P.T	2.08	0.86	3.58	5000 PSI	5 GPM
NVI-03	3/8" N.P.T	2.08	0.86	3.58	5000 PSI	8 GPM
NVI-04	1/2" N.P.T	2.44	1.25	4.48	5000 PSI	15 GPM
NVI-06	3/4" N.P.T	3.54	1.49	5.82	5000 PSI	25 GPM



Designed for use with air, oil, water, steam, liquid fuel & most chemicals.